

SPECIFICATIONS

Splice plates shall conform to the requirements of A.S.T.M. A36 and nuts shall conform to the requirements of A.S.T.M. A563, Grade A or better, and the plate with the nuts attached shall be galvanized in accordance with the requirements of A.S.T.M. A123 except when corrosion resistant steel is requested. When corrosion resistant steel is requested the plates shall conform to the requirements of A.S.T.M. A588 and the nuts shall conform to or exceed the mechanical requirements of A.S.T.M. A563, Grade A, and be made of steel having an atmospheric corrosion resistance approximately two times that of carbon structural steel with copper. Corrosion resistant plates and nuts shall not be painted or galvanized.

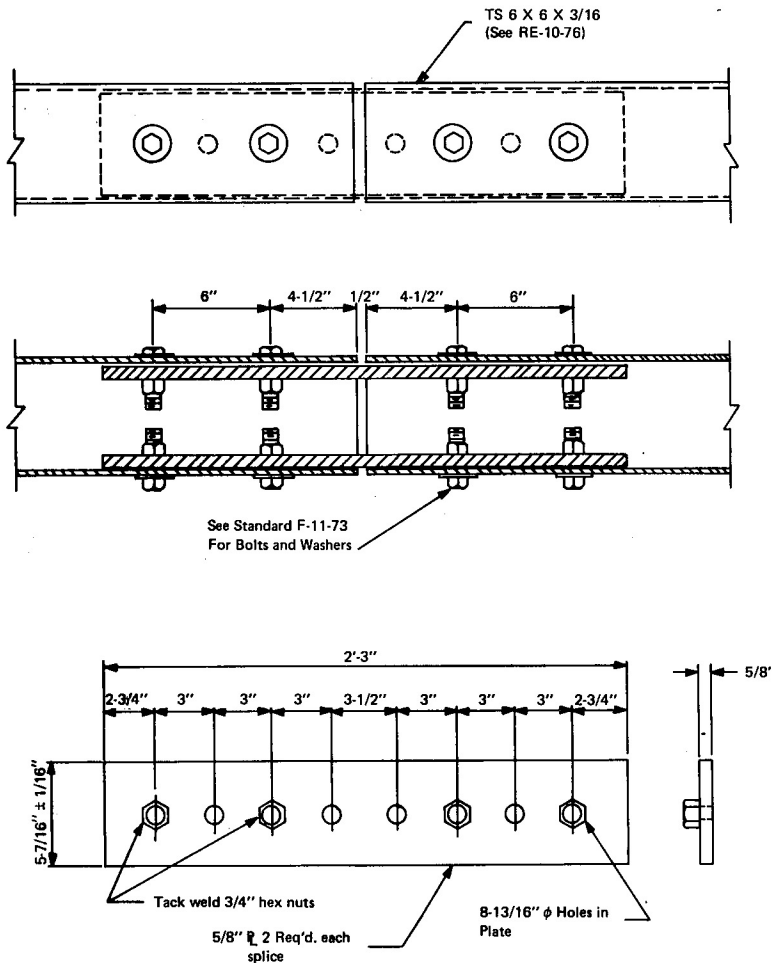
All welding shall conform to the current requirements contained in the American Welding Society Structural Welding Code, AWS D1.1.

No punching, drilling, cutting or welding will be permitted after galvanizing except that an excess zinc deposit on the threads of the nuts shall be removed by tapping or brushing the threads.

Dimensional tolerances not shown or implied are intended to be those consistent with the proper functioning of the part, including its appearance and accepted manufacturing practices.

INTENDED USE

These plates are for splicing the rail elements in the standard box beam guardrail system G3 .



**TS 6 × 6 × .188 RAIL
SPLICE PLATES**

HM-TF-13

RE-11-73

STANDARD